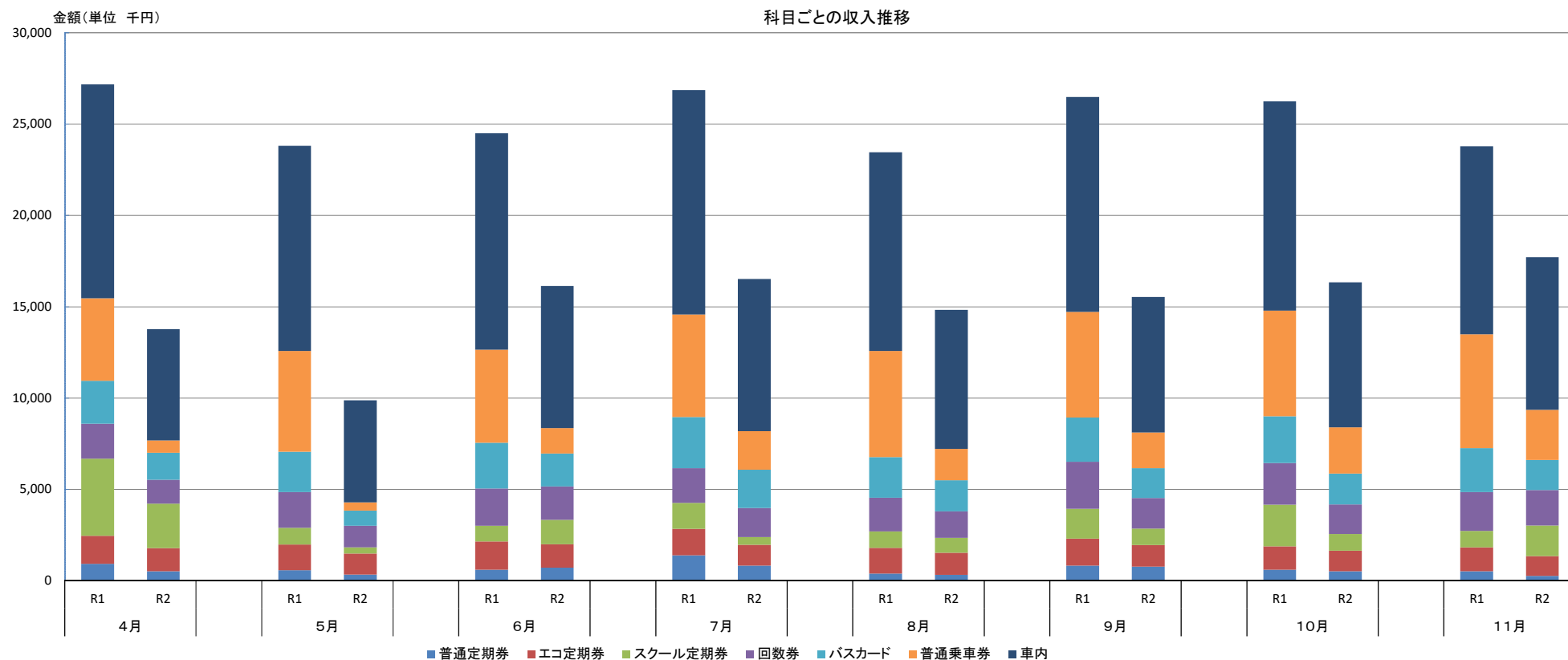


新型コロナウイルスの影響
路線バス

単位:円

科目	4月			5月			6月			7月			8月			9月			10月			11月		
	R1	R2	対前年比	R1	R2	対前年比	R1	R2	対前年比	R1	R2	対前年比	R1	R2	対前年比	R1	R2	対前年比	R1	R2	対前年比	R1	R2	対前年比
普通定期券	931,370	524,700	56.3%	579,330	349,080	60.3%	620,440	729,620	117.6%	1,398,480	843,770	60.3%	404,460	332,830	82.3%	843,660	785,130	93.1%	610,210	523,570	85.8%	529,650	277,490	52.4%
エコ定期券	1,544,132	1,270,413	82.3%	1,410,165	1,152,013	81.7%	1,537,865	1,279,413	83.2%	1,450,818	1,135,750	78.3%	1,405,144	1,208,936	86.0%	1,477,685	1,173,698	79.4%	1,289,203	1,132,481	87.8%	1,309,915	1,082,317	82.6%
スクール定期券	4,218,860	2,434,560	57.7%	917,000	331,280	36.1%	859,040	1,334,000	155.3%	1,429,000	419,000	29.3%	897,000	814,840	90.8%	1,626,000	904,560	55.6%	2,281,000	918,120	40.3%	892,000	1,675,000	187.8%
回数券	1,913,300	1,305,000	68.2%	1,957,300	1,181,000	60.3%	2,036,800	1,828,900	89.8%	1,895,700	1,586,600	83.7%	1,848,500	1,453,400	78.6%	2,573,100	1,681,620	65.4%	2,276,500	1,615,230	71.0%	2,133,600	1,945,100	91.2%
バスカード	2,350,194	1,486,475	63.2%	2,212,719	833,826	37.7%	2,512,008	1,806,534	71.9%	2,799,458	2,107,820	75.3%	2,217,583	1,704,806	76.9%	2,427,679	1,633,013	67.3%	2,553,061	1,681,772	65.9%	2,408,507	1,644,076	68.3%
普通乗車券	4,520,000	663,940	14.7%	5,510,720	454,200	8.2%	5,095,790	1,381,900	27.1%	5,612,700	2,107,150	37.5%	5,818,580	1,710,220	29.4%	5,780,560	1,956,190	33.8%	5,787,670	2,535,180	43.8%	6,222,710	2,744,280	44.1%
車内	11,700,147	6,103,074	52.2%	11,233,826	5,585,409	49.7%	11,844,742	7,792,407	65.8%	12,287,830	8,332,506	67.8%	10,876,783	7,617,043	70.0%	11,755,999	7,406,566	63.0%	11,456,132	7,934,928	69.3%	10,287,708	8,356,845	81.2%
合計	27,178,003	13,788,162	50.7%	23,821,060	9,886,808	41.5%	24,506,685	16,152,774	65.9%	26,873,986	16,532,596	61.5%	23,468,050	14,842,075	63.2%	26,484,683	15,540,777	58.7%	26,253,776	16,341,281	62.2%	23,784,090	17,725,108	74.5%



新型コロナウイルスの影響
貸切バス

単位:円

月	4月			5月			6月			7月			8月			9月			10月			11月		
	R1	R2	対前年比	R1	R2	対前年比	R1	R2	対前年比	R1	R2	対前年比	R1	R2	対前年比	R1	R2	対前年比	R1	R2	対前年比	R1	R2	対前年比
一般貸切	3,528,252	376,805	10.7%	6,480,600	376,805	5.8%	4,688,010	430,305	9.2%	1,911,600	620,090	32.4%	2,702,545	917,000	33.9%	3,302,925	1,259,765	38.1%	5,898,816	4,915,374	83.3%	6,440,857	3,594,734	55.8%
固定貸切	1,830,000	1,926,104	105.3%	2,318,000	1,926,094	83.1%	2,440,000	2,614,969	107.2%	1,708,000	2,284,309	133.7%	122,000	2,174,604	1782.5%	2,318,000	2,426,094	104.7%	2,583,000	2,426,094	93.9%	2,460,000	2,426,094	98.6%
主催貸切	556,231		0.0%	472,270		0.0%	560,300	0	0.0%	386,500	0	0.0%	536,000	0	0.0%	309,030		0.0%	158,600		0.0%	689,600	111,540	16.2%
合計	5,914,483	2,302,909	38.9%	9,270,870	2,302,899	24.8%	7,688,310	3,045,274	39.6%	4,006,100	2,904,399	72.5%	3,360,545	3,091,604	92.0%	5,929,955	3,685,859	62.2%	8,640,416	7,341,468	85.0%	9,590,457	6,132,368	63.9%

