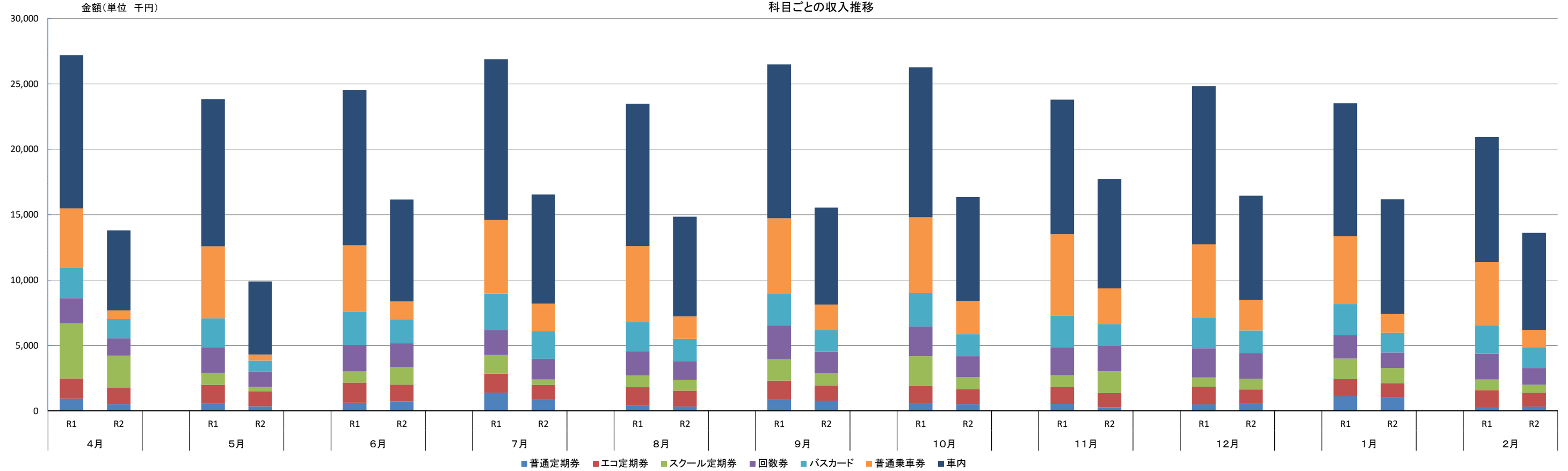


新型コロナウイルスの影響
路線バス

単位:円

科目	4月			5月			6月			7月			8月			9月			10月			11月			12月			R3年 1月			R3年 2月		
	R1	R2	対前年比	R1	R2	対前年比	R1	R2	対前年比	R1	R2	対前年比	R1	R2	対前年比	R1	R2	対前年比	R1	R2	対前年比	R1	R2	対前年比	R1	R2	対前年比	R1	R2	対前年比			
普通定期券	931,370	524,700	56.3%	579,330	349,080	60.3%	620,440	729,620	117.6%	1,398,480	843,770	60.3%	404,460	332,830	82.3%	843,660	785,130	93.1%	610,210	523,570	85.8%	529,650	277,490	52.4%	493,130	606,490	123.0%	1,109,290	1,040,770	93.8%	224,600	326,130	145.2%
エコ定期券	1,544,132	1,270,413	82.3%	1,410,165	1,152,013	81.7%	1,537,865	1,279,413	83.2%	1,450,818	1,135,750	78.3%	1,405,144	1,208,936	86.0%	1,477,685	1,173,698	79.4%	1,289,203	1,132,481	87.8%	1,309,915	1,082,317	82.6%	1,357,153	1,031,020	76.0%	1,321,915	1,056,803	79.9%	1,365,613	1,067,433	78.2%
スクール定期券	4,218,860	2,434,560	57.7%	917,000	331,280	36.1%	859,040	1,334,000	155.3%	1,429,000	419,000	29.3%	897,000	814,840	90.8%	1,626,000	904,560	55.6%	2,281,000	918,120	40.3%	892,000	1,675,000	187.8%	704,000	833,960	118.5%	1,567,000	1,185,000	75.6%	812,280	613,000	75.5%
回数券	1,913,300	1,305,000	68.2%	1,957,300	1,181,000	60.3%	2,036,800	1,828,900	89.8%	1,895,700	1,586,600	83.7%	1,848,500	1,453,400	78.6%	2,573,100	1,681,620	65.4%	2,276,500	1,615,230	71.0%	2,133,600	1,945,100	91.2%	2,241,000	1,921,600	85.7%	1,797,500	1,177,600	65.5%	1,963,400	1,267,300	64.5%
バスカード	2,350,194	1,486,475	63.2%	2,212,719	833,826	37.7%	2,512,008	1,806,534	71.9%	2,799,458	2,107,820	75.3%	2,217,583	1,704,806	76.9%	2,427,679	1,633,013	67.3%	2,553,061	1,681,772	65.9%	2,408,507	1,644,076	68.3%	2,314,190	1,755,857	75.9%	2,366,195	1,507,969	63.7%	2,153,256	1,568,201	72.8%
普通乗車券	4,520,000	663,940	14.7%	5,510,720	454,200	8.2%	5,095,790	1,381,900	27.1%	5,612,700	2,107,150	37.5%	5,818,580	1,710,220	29.4%	5,780,560	1,956,190	33.8%	5,787,670	2,535,180	43.8%	6,222,710	2,744,280	44.1%	5,613,650	2,314,070	41.2%	5,184,930	1,434,850	27.7%	4,854,120	1,354,190	27.9%
車内	11,700,147	6,103,074	52.2%	11,233,826	5,585,409	49.7%	11,844,742	7,792,407	65.8%	12,287,830	8,332,506	67.8%	10,876,783	7,617,043	70.0%	11,755,999	7,406,566	63.0%	11,456,132	7,934,928	69.3%	10,287,708	8,356,845	81.2%	12,096,997	7,982,203	66.0%	10,163,092	8,768,406	86.3%	9,569,088	7,415,136	77.5%
合計	27,178,003	13,788,162	50.7%	23,821,060	9,886,808	41.5%	24,506,685	16,152,774	65.9%	26,873,986	16,532,596	61.5%	23,468,050	14,842,075	63.2%	26,484,683	15,540,777	58.7%	26,253,776	16,341,281	62.2%	23,784,090	17,725,108	74.5%	24,820,120	16,445,200	66.3%	23,509,922	16,171,398	68.8%	20,942,357	13,611,390	65.0%



新型コロナウイルスの影響
貸切バス

単位:円

月	4月			5月			6月			7月			8月			9月			10月			11月			12月			R3年 1月			R3年 2月		
	科目	R1	R2	対前年比	R1	R2	対前年比	R1	R2	対前年比	R1	R2	対前年比	R1	R2	対前年比	R1	R2	対前年比	R1	R2	対前年比	R1	R2	対前年比	R1	R2	対前年比	R1	R2	対前年比		
一般貸切	3,528,252	376,805	10.7%	6,480,600	376,805	5.8%	4,688,010	430,305	9.2%	1,911,600	620,090	32.4%	2,702,545	917,000	33.9%	3,302,925	1,259,765	38.1%	5,898,816	4,915,374	83.3%	6,440,857	3,594,734	55.8%	2,824,936	944,885	33.4%	1,970,156	652,460	33.1%	2,481,334	421,100	17.0%
固定貸切	1,830,000	1,926,104	105.3%	2,318,000	1,926,094	83.1%	2,440,000	2,614,969	107.2%	1,708,000	2,284,309	133.7%	122,000	2,174,604	1782.5%	2,318,000	2,426,094	104.7%	2,583,000	2,426,094	93.9%	2,460,000	2,426,094	98.6%	2,091,000	2,426,094	116.0%	2,091,000	2,426,094	116.0%	2,214,000	2,426,094	109.6%
主催貸切	556,231		0.0%	472,270		0.0%	560,300	0	0.0%	386,500	0	0.0%	536,000	0	0.0%	309,030		0.0%	158,600		0.0%	689,600	111,540	16.2%	160,400	56,200	35.0%	344,600	0	0.0%	611,500	56,200	9.2%
合計	5,914,483	2,302,909	38.9%	9,270,870	2,302,899	24.8%	7,688,310	3,045,274	39.6%	4,006,100	2,904,399	72.5%	3,360,545	3,091,604	92.0%	5,929,955	3,685,859	62.2%	8,640,416	7,341,468	85.0%	9,590,457	6,132,368	63.9%	5,076,336	3,427,179	67.5%	4,405,756	3,078,554	69.9%	5,306,834	2,903,394	54.7%

